

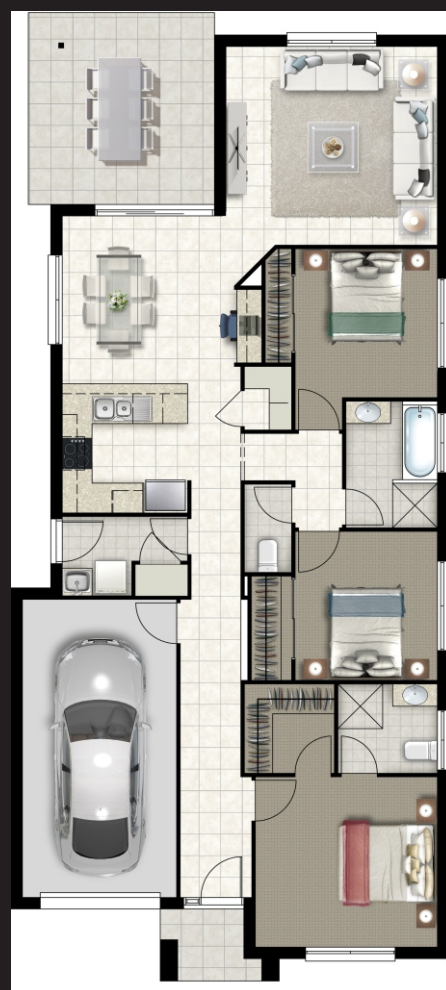
# Suva 1650 | 153 sqm



## Villa Lot

### Suits 10 Metre frontage

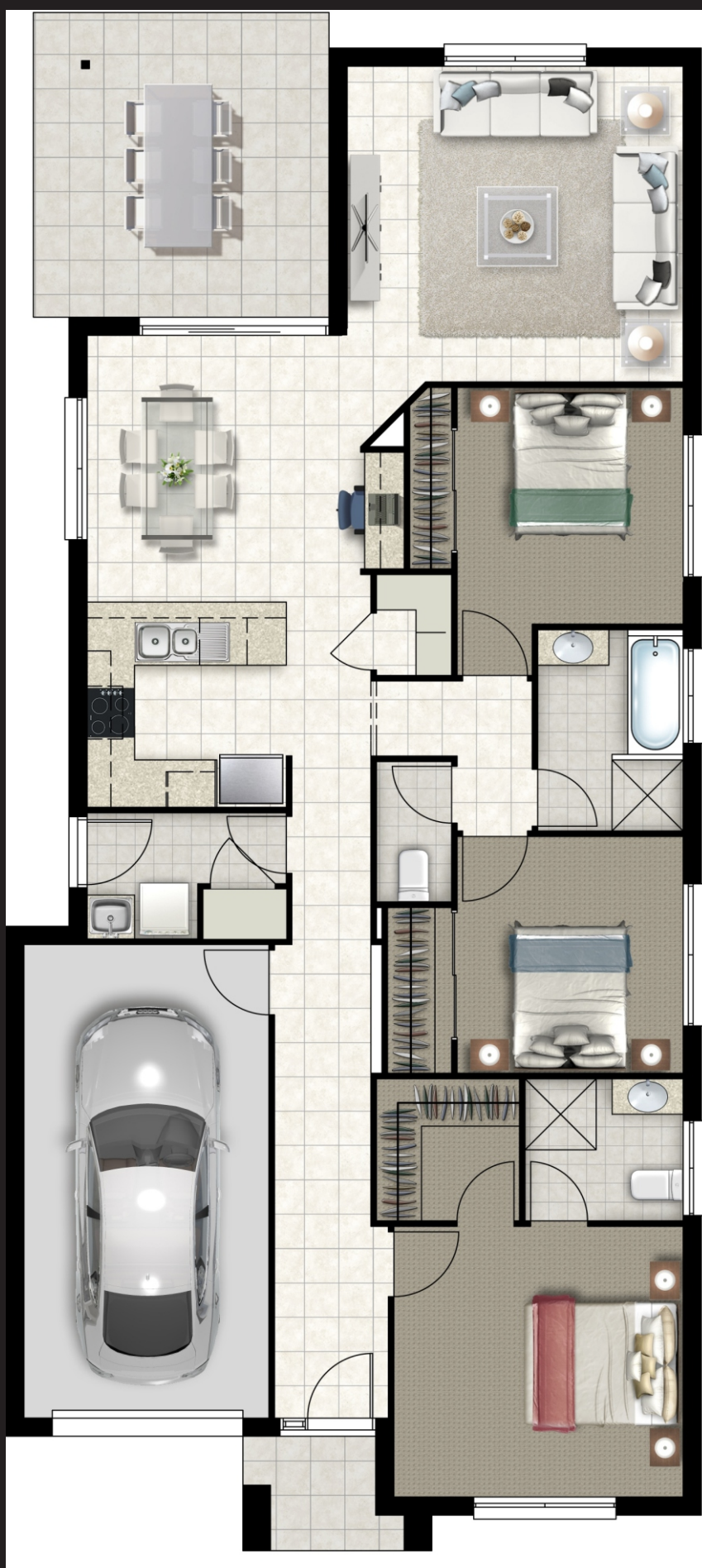
- Open Plan Living
- Stone Benchtops to Kitchen
- Westinghouse Stainless Steel Appliances
- Hamys 3 Coat Paint System
- Three Spacious Bedrooms
- Leaver Door Handles throughout
- Large Alfresco Area
- Single Garage
- Choice of Facades
- Separate Laundry



Aspley Home Maker Centre  
Suite 2 825 Zillmere Rd  
Aspley Qld 4034

07 3480 4050

Photographs and facades are for illustrative purposes only and may not represent standard or finished floor plans, specifications.  
Whilst every effort is made to provide accurate and complete information CSH does not warrant or represent that this advertisement is free from errors or omissions.  
CSH reserves the right to change plans, prices, specifications, materials and suppliers without notice. House Siting subject to approval and acceptance by CSH -Administration.  
QBSA Act. License No 1153367 \* Based on Classic Facade



Shop 2 825 Zillmere Road  
Aspley Qld 4034

**07 3256 5450**

Photographs and facades are for illustrative purposes only and may not represent standard or finished floor plans, specifications.  
Whilst every effort is made to provide accurate and complete information CSH does not warrant or represent that this advertisement is free from errors or omissions.  
CSH reserves the right to change plans, prices, specifications, materials and suppliers without notice. House Siting subject to approval and acceptance by CSH -Administration.  
QBSA Act. License No 1153367 \* Based on Classic Facade